



SPRINGWOOD PRIMARY SCHOOL

Helping every learner spread their wings and fly

Springwood is a school in Llanedeyrn, Cardiff.

We have 280+ wonderful pupils, as well as an Autism resource base and a wellbeing class.

The school has extensive grounds and wonderful links to the local area and community organisations.

There are 70 staff members, 13 governors and our fantastic families, who are all valued members of the Springwood community.

ACHIEVE • SUCCEED • BE HAPPY



A CURRICULUM GROWN FOR OUR SPRINGWOOD FAMILY

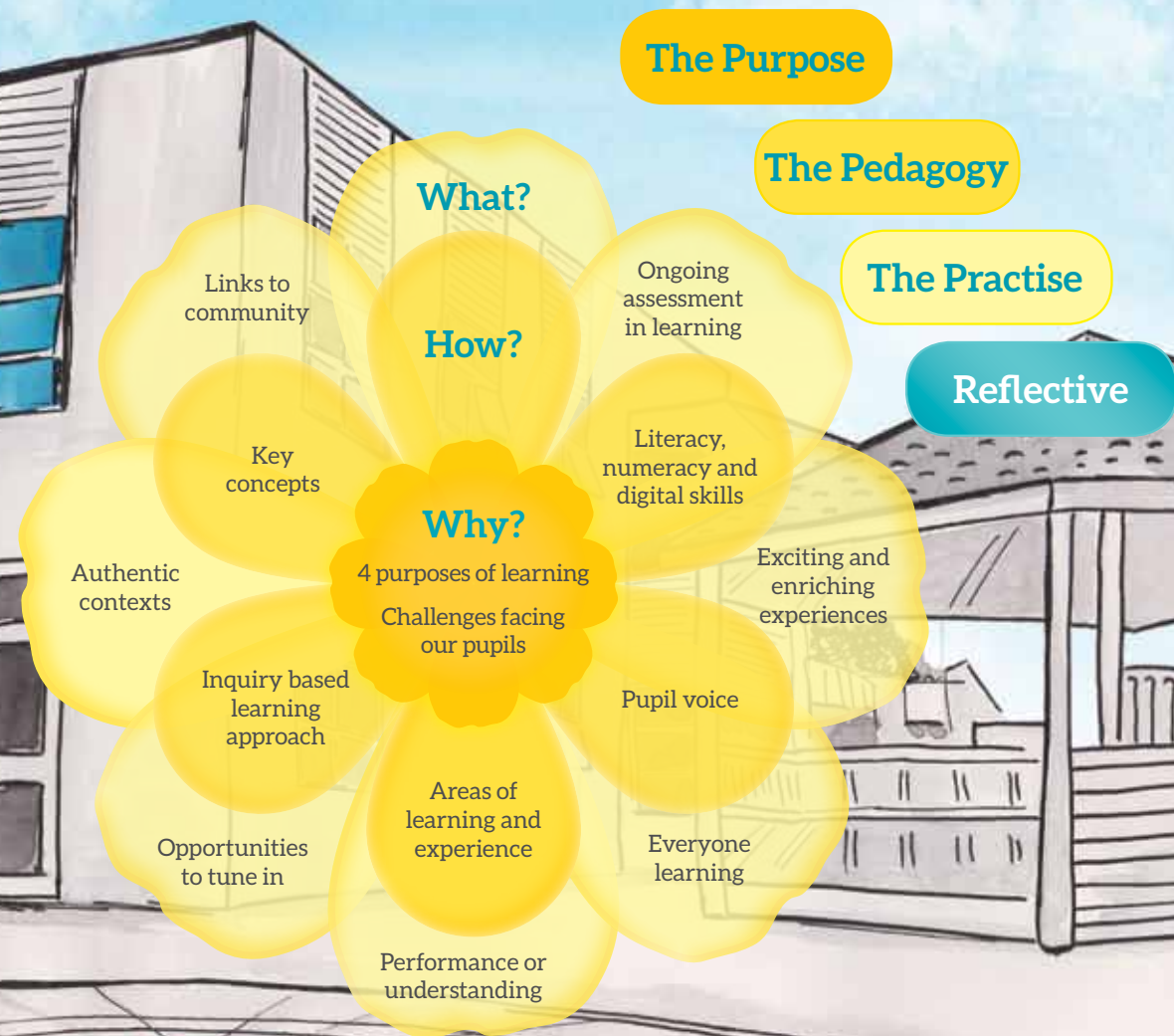
Our curriculum starts with the child at the **centre**. It's everything a child experiences from the second they walk through that door.

Why we are teaching our pupils always comes first. Always with the 4 purposes of the curriculum as our line of sight for each child.

How we teach is constantly reflected on and adapted to meet the needs of every child, with all practitioners taking an active role in their own development.

What we teach is based on the experiences, knowledge and skills the whole Springwood family requires to achieve, succeed and be happy throughout their lives.

At Springwood Primary, we offer our children an engaging, enriched curriculum that is concept driven and authentic. A wide range of inquiries that stem from the 4 purposes and focus on What Matters are taught, with the ultimate goal of helping our children overcome challenges that face the modern world through the six areas of learning and experience (AoLEs)



HELPING EVERY LEARNER SPREAD THEIR WINGS AND FLY



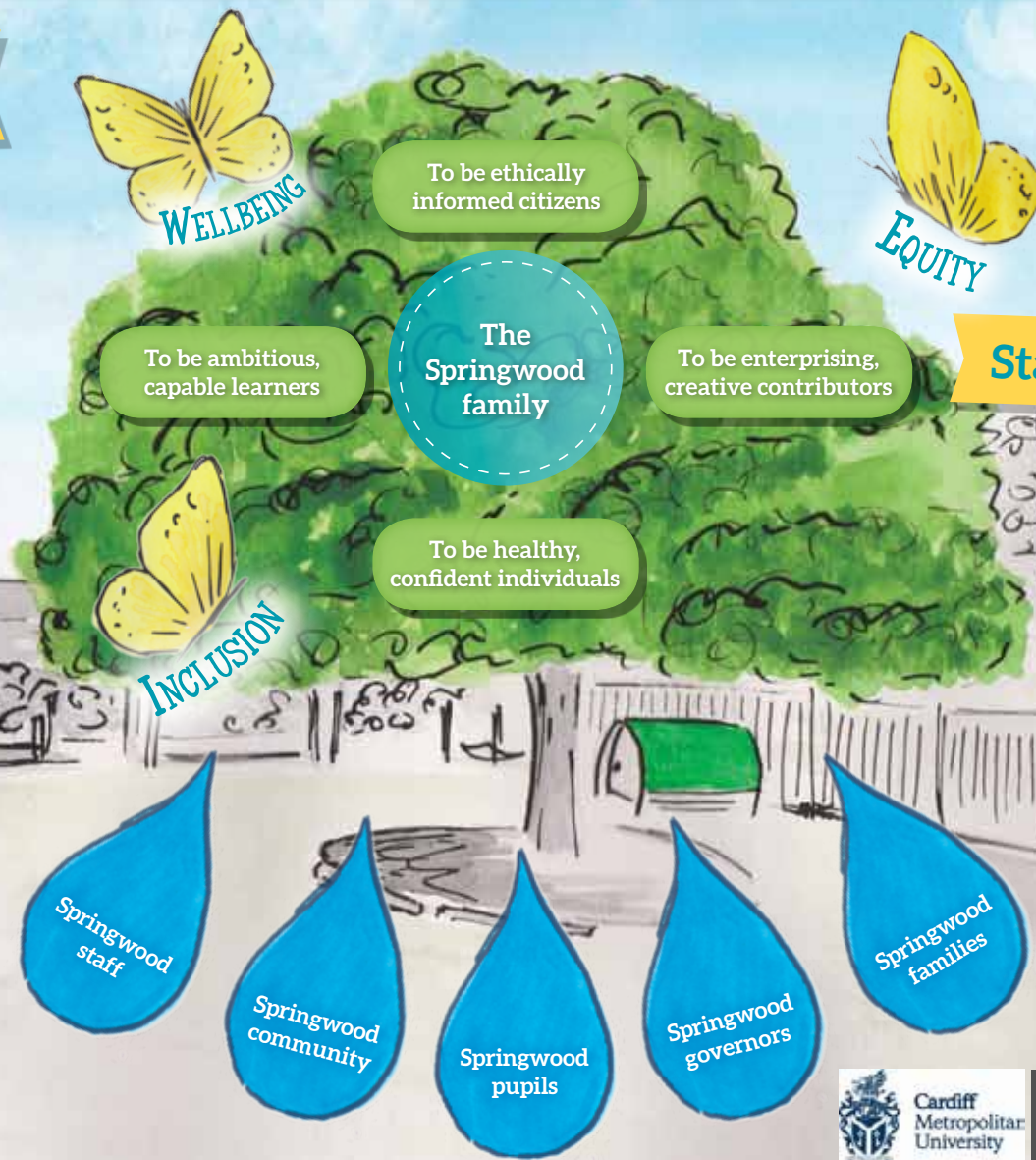
THE SPRINGWOOD FAMILY

Springwood Vision

Everything we have chosen for our curriculum offer has the inclusion, equity and wellbeing of all our Springwood family at its heart.

We know that for a school to become a real community and family, then wellbeing and equity for all is necessary for every learner to thrive.

If our pupils, staff and families are happy, then they can learn: And if they can learn and achieve their potential, they can realise the four purposes of learning by growing as life long learners.



Staff wellbeing charter

- Trust** - we trust you in what you do
- Support** - we will support you when/if you need it
- Care** - we care about you
- Guidance** - we will offer guidance when/if you need it
- Interest** - we take an interest in you beyond the school
- Happiness** - we want you to be happy in work
- Balance** - we want you to get the balance of work and personal life right. Make time for yourself and family.



HELPING EVERY LEARNER SPREAD THEIR WINGS AND FLY



DESIGNING OUR CURRICULUM



The four purposes of learning

Challenges that our pupils face

Identity and diversity

Good health and wellbeing

Peace and conflict

The environment crisis

The impact of technology

Cluster working



Autumn
Health and wellbeing inquiry

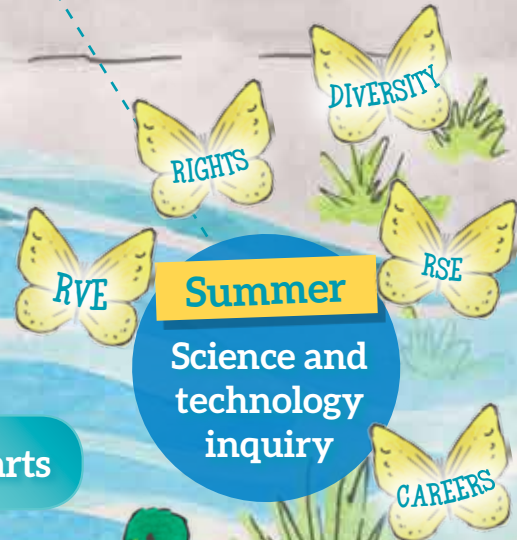
Literacy

Numeracy

Spring
Humanities inquiry

Digital

Expressive arts



Summer
Science and technology inquiry

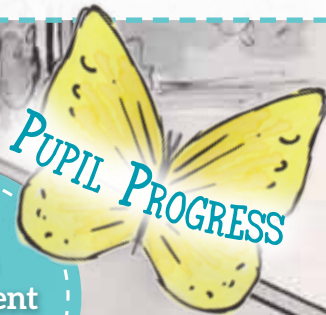


HELPING EVERY LEARNER SPREAD THEIR WINGS AND FLY



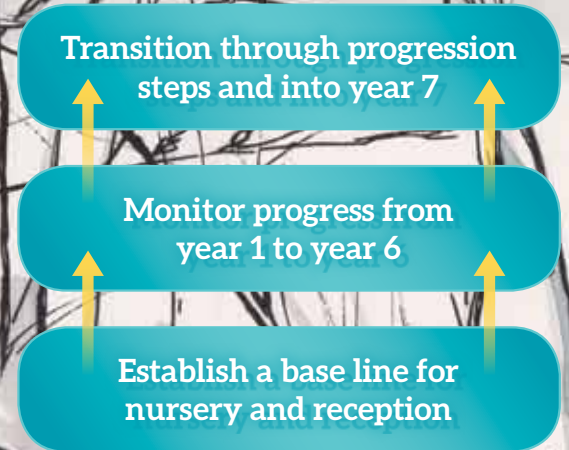
ONGOING EVALUATION AND ASSESSMENT

We have designed a curriculum, by selecting the knowledge, skills and experiences that best support our learners to progress in the ways described in CfW - we have developed assessment arrangements to support each individual learner to progress in relation to our curriculum. The focus is on identifying where the learner is in their learning, their next steps and the support or challenge needed to move forward and make further progress.



Principles of Progression

- Increasing effectiveness as a learner
- Increasing breadth and depth of Knowledge
- Deepening understanding of the ideas and disciplines within AoLEs.
- Refinement and increasing sophistication in the use and application of skills
- Making connections and transferring learning into new contexts



HELPING EVERY LEARNER SPREAD THEIR WINGS AND FLY